

**KÖHLER**  
TESTING TECHNOLOGIES **VLM**



**KÖHLER**  
TESTING TECHNOLOGIES **VLM**



## Contact

Distribué en France par:  
Brant-Industrie  
14 bis Place de la République  
59260 HELLEMMES  
+ TEL. 03 20 50 45 53  
+ [infos@brant-industrie.fr](mailto:infos@brant-industrie.fr)  
+ [www.brant-industrie.fr](http://www.brant-industrie.fr)

**BRANT**  
Matériels pour le Laboratoire et l'Industrie  
INDUSTRIE

Our new Corrosion testing systems  
**Combined expertise – powerful performance**

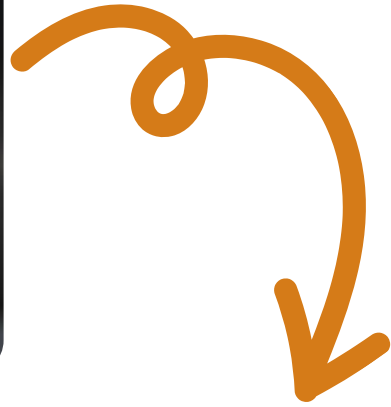
CORROSION IN SIGHT  
QUALITY INSIDE

CORROSION IN SIGHT  
QUALITY INSIDE

# Together into the future

With more than 70 years of experience in environmental simulation, we are passionate about developing and designing corrosion testing equipment.

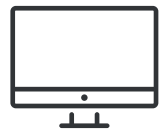
Thanks to our expertise and close cooperation with our customers, we have been able to develop a new generation of devices that combines all the positive features of Köhler and VLM.



Using state-of-the-art manufacturing processes, we have succeeded in developing a consistently harmonious overall system that leaves nothing to be desired.



Test chamber made of special stainless steel for optimum heat transfer



WAGO control with graphical visualization on a 10.1" touchscreen, Linux-based



Dual-substance nozzle made of PVDF, adjustable to any position via an articulated arm



Energy savings through innovative heating technology



Multiple positioning options for a wide variety of products



Visible glass humidifier for easy monitoring and maintenance



**BRANT**  
Matériels pour le Laboratoire et l'Industrie  
**INDUSTRIE**



# Our wide range of options

Our top-loading version is available in three different sizes:

## KV-T 1000, KV-T 2000 and KV-T 3000

All variants are suitable for the following test standards in their standard configuration:

- DIN EN ISO 9227 NSS
- DIN EN 80068-2-11
- ASTM B 117

### Extended test standards:

- DIN EN ISO 6270-2 CH, AHT, AT
- DIN EN ISO 11997-1, Cycle B
- VW PV 1210

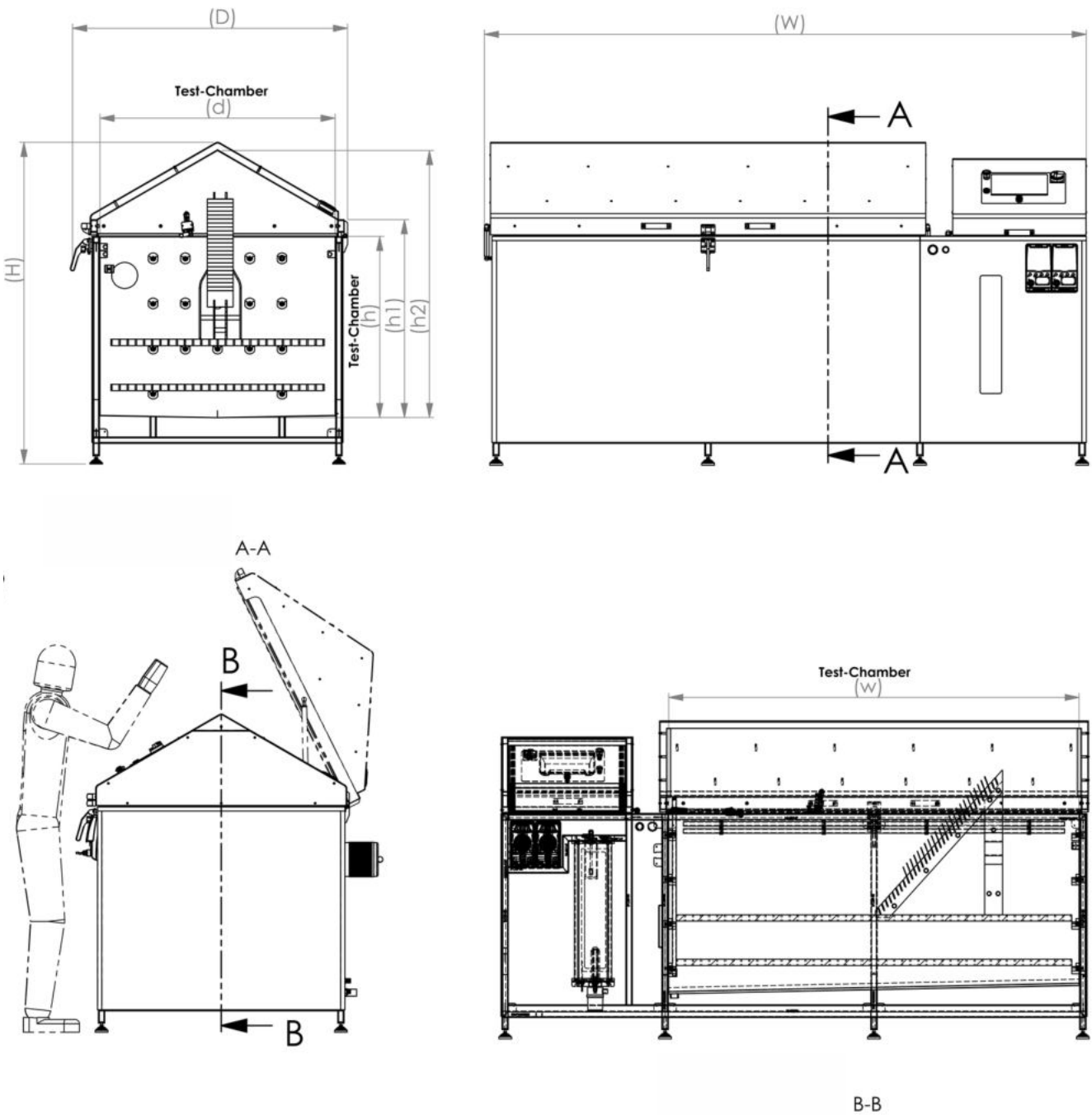
*Note: For the VW PV 1210 and/or DIN EN ISO 11997-1, Cycle B test standard, an additional climate module is required, which can be set up near the system and then connected to it. This requires approx. 1 m<sup>2</sup> of additional space.*

### Additional options:

- Test chamber cleaning
- Wall cooling
- Cable feed-through
- Brine circulation
- Working contacts

### Further accessories:

- Support rods
- GRP grids
- Test plate holders
- Sodium chloride



KV-T			1000	2000	3000
test room	Width [mm]	(w)	940	1940	3940
	Depth [mm]	(d)	1095	1095	1095
	Height [mm] (test edge)	(h)	840	840	840
	Height [mm] (sloping roof)	(h1)	940	940	940
	Height [mm] (gable)	(h2)	1285	1285	1285
Outside	Width [mm]	(W)	1800	2800	3800
	Depth [mm]	(D)	1405	1405	1405
	Height [mm]	(H)	1505	1505	1505
Basic equipment for salt spray testing	dosing pumps		1	2	2
	Precipitation amount (adjustable)		0,5 - 3,0 ml/h		
	Spray pressure (adjustable)		0,5 - 3,0 bar		
	spray nozzles		Adjustable two-substance nozzle made of PVDF		
	brine reservoir		140l	250l	250l
Weight [kg]			400	500	600
Material testing room			stainless steel		
Basic construction material			stainless steel		
Maximum chamber temperature			80°C		



# Would you like a pinch of salt?



## Those who know it swear by it:

### SaliCORR® Sodium Chloride for Corrosion Testing

- High purity, with quality certificate
- Free-flowing, guaranteed without anti-caking agents
- Ready-to-use packages with precise weighing

### Available in the following quality grades:

#### SaliCORR® Sodium Chloride

NaCl Special grade for corrosion testing in accordance with ISO 9227

#### SaliCORR® ASTM Sodium Chloride

NaCl, special grade for corrosion testing in accordance with ISO 9227, ASTM B 117, EN 60068-2-11

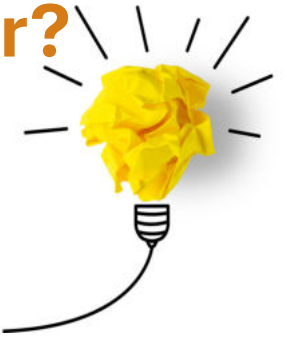
#### SaliCORR® SP Sodium Chloride

NaCl, special grade for corrosion testing in accordance with ISO 6353-2, DIN EN ISO 9227:2017, ASTM B117, EN 60068-2-11, RSA 36-00-802CH/09, Nissan MO158

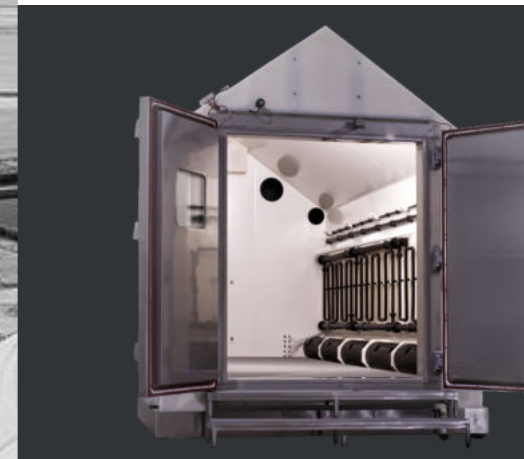
### Available in the following packaging sizes:

- PE bag 5 kg
- PE bucket 10 kg
- PE bucket 20 kg
- PE bucket 25 kg

# Not found what you're looking for? No problem!



We offer additional salt spray systems and laboratory supplies.



## DeepFreeze – Everything in one system

Our DeepFreeze series offers a range of solutions that comply with the DIN EN ISO 11997-3 (DIN 55635; VDA 233-102) standard.

From chests for top loading and cabinets for front loading to walk-in and drive-in custom chambers, anything is possible:

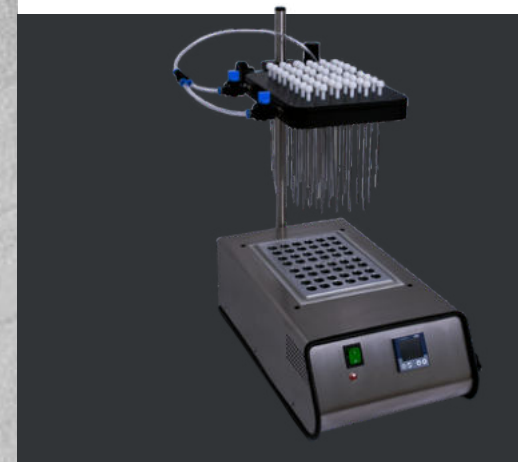
- Chest with 1000 l
- Cabinet with 500 l to 2000 l
- Custom chamber up to 100 m<sup>3</sup>

## Battery test – tomorrow's technology today

Quality assurance for batteries in electric vehicles, for example, is becoming increasingly important.

The safety of people and the environment plays a crucial role here. To ensure long-term safety, batteries must be tested under a wide range of weather conditions.

We offer a corrosion testing system for battery tests, which allows us to implement various testing standards. Thanks to precisely coordinated safety measures and close consultation with our customers, we can find a solution for all customer requirements. All existing hazard levels (HL) 0-7 can be implemented.



## Laboratory supplies – quality redefined

Metal block thermostats and evaporators in a wide range of variations and sizes.

Only high-quality components that offer a high level of reliability are used. In addition to the variants, we also offer a wide variety of heating blocks that are easy to replace. We can also manufacture special blocks on customer request.