

## Double-walled containers from 10 to 2500 litres



### Double-walled, temperature-controlled stainless steel containers with carrying handles and drain valve (industrial design)

Containers from 10 to 50 litres have a product outlet with male thread. The product outlet can be equipped with an optional ball valve or a flap valve.

In addition, the dispersion containers can be delivered with wheels, legs or a two-part cover. Please request your desired options.

Volume	Internal diameter	Height without wheels	Height with wheels	Part number
10 litres	22 cm	30 cm	38 cm	D26/AB0010
15 litres	25.5 cm	34 cm	42 cm	D26/AB0015
20 litres	28 cm	37 cm	45 cm	D26/AB0020
25 litres	30 cm	39.5 cm	47.5 cm	D26/AB0025
35 litres	33.5 cm	43.5 cm	51.5 cm	D26/AB0035
50 litres	38 cm	48.5 cm	56.5 cm	D26/AB0050



### Double-walled, temperature-controlled stainless steel containers with handles, wheels and flap valve (industrial design)

Large double-walled containers with a volume of 75 to 250 litres are used in pilot plants and in production and have an fitted flap valve.

Smooth running wheels and the practical handles allow these containers to be handled easily.

Volume	Internal diameter	Height incl. wheels	Part number
75 litres	44.2 cm	69 cm	SK-DB-0075
100 litres	49.2 cm	71.9 cm	SK-DB-0100
150 litres	59.2 cm	77 cm	SK-DB-0150
200 litres	64.2 cm	83 cm	SK-DB-0200
250 litres	69.2 cm	87 cm	SK-DB-0250
350 litres	74.2 cm	104.4 cm	SK-DB-0350
500 litres	84.2 cm	116.7 cm	SK-DB-0500
750 litres	94.2 cm	131.7 cm	SK-DB-0750
1000 litres	109.2 cm	131 cm	SK-DB-1000
1250 litres	119.2 cm	136.5 cm	SK-DB-1250
1500 litres	129.2 cm	165 cm	SK-DB-1500
1750 litres	129.2 cm	175 cm	SK-DB-1750
2000 litres	134.2 cm	175 cm	SK-DB-2000
2500 litres	144.2 cm	177 cm	SK-DB-2500

# Single-walled containers from 125 ml to 50 litres

Single-walled containers are suitable for many laboratory and pilot plant applications. The sturdy single-walled containers are available in different designs.



## Single-walled stainless steel containers

Volume	Inner-Ø	Internal height	Article no.
125 ml	5 cm	7 cm	D03/000125
250 ml	6.5 cm	8.5 cm	D03/000250
500 ml	8 cm	11 cm	D03/000500
1 litres	10 cm	13 cm	D03/001000
2 litres	12 cm	18 cm	D03/002000
3 litres	14 cm	20 cm	D03/003000
5 litres	18 cm	20 cm	D03/005000



## Single-walled stainless steel containers with carrying handle

Volume	Inner-Ø	Internal height	Article no.
10 litres	24 cm	26 cm	D03/0C0010
15 litres	27 cm	30 cm	D03/0C0015



## Single-walled stainless steel containers with carrying handles

Volume	Inner-Ø	Internal height	Article no.
20 litres	27 cm	37.5 cm	D03/0C0020
25 litres	30 cm	37.5 cm	D03/0C0025
30 litres	30 cm	44 cm	D03/0C0030
50 litres	34 cm	55 cm	D03/0C0050



## Single-walled, stainless steel containers with carrying handles and a drain opening (industrial design)

The 10 to 50 litre containers have a drain opening which can be equipped with a ball valve or a flap valve. In addition, the dispersion containers can be delivered with wheels, and a two-part cover. Please specify the required options in your inquiry.

Volume	Internal diameter	Height without wheels	Height with wheels	Part number
10 litres	22 cm	30 cm	34.8 cm	D26/ABEW10
15 litres	25.5 cm	34 cm	38.8 cm	D26/ABEW15
20 litres	28 cm	37 cm	41.8 cm	D26/ABEW20
25 litres	30 cm	39.5 cm	44.3 cm	D26/ABEW25
35 litres	33.5 cm	43.5 cm	48.3 cm	D26/ABEW35
50 litres	38 cm	48.5 cm	53.3 cm	D26/ABEW50

# Single-walled containers

75 to 2500 litre



## Single-walled, stainless steel containers with handles, wheels and flap valve (industrial design)

The large single-walled containers of 75 to 250 litres have an fitted flap valve. The smooth running wheels and their practical handles make the handling especially simple.

Volume	Internal diameter	Height incl. wheels	Part number
75 litres	44.2 cm	69 cm	SK-EB-0075
100 litres	49.2 cm	71.9 cm	SK-EB-0100
150 litres	59.2 cm	77 cm	SK-EB-0150
200 litres	64.2 cm	83 cm	SK-EB-0200
250 litres	69.2 cm	87 cm	SK-EB-0250
350 litres	74.2 cm	104.4 cm	SK-EB-0350
500 litres	84.2 cm	116.7 cm	SK-EB-0500
750 litres	94.2 cm	130.7 cm	SK-EB-0750
1000 litres	109.2 cm	131 cm	SK-EDB-1000
1250 litres	119.2 cm	136.5 cm	SK-EB-1250
1500 litres	129.2 cm	144 cm	SK-EB-1500
1750 litres	129.2 cm	165 cm	SK-EB-1750
2000 litres	134.2 cm	175 cm	SK-EB-2000
2500 litres	144.2 cm	177 cm	SK-EB-2500









## Electropolished containers

Containers can also be electropolished.



## Swivel type containers

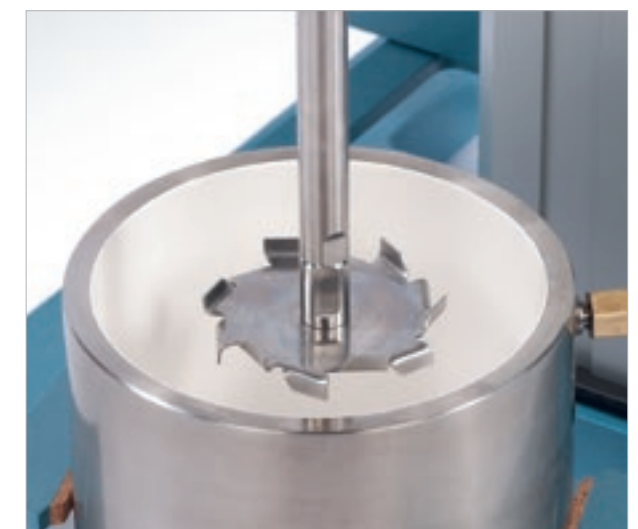
Stainless steel slewable double wall temperature control containers, with tilting device and pouring lip. The pouring lip and handle allow easy and

safe decanting. The containers can be easily and quickly removed from the stand for mixing or cleaning purposes.

Volume	Internal diameter	Height incl. wheels	Part number
10 litres	23.8 cm	47 cm	D25/KSA010
15 litres	27.8 cm	58 cm	D25/KSA015
25 litres	32 cm	58.3 cm	D25/KSA025
50 litres	39.6 cm	68 cm	D25/KSA050
60 litres	44.2 cm	93 cm	D25/KSA060
80 litres	44.2 cm	100 cm	D25/KSA080

## Coated containers

All single-walled and double-walled containers are available with different coating options for the internal walls. Please contact us.



## Special containers and custom-made products



**Your desired container is not shown?**

We can supply individual containers according to customer's requirements

We look forward to receiving your inquiry:

**+49 2296 - 8030**  
**info@vma-getzmann.de**



# Special containers and custom-made products



## Vacuum containers, special projects, special coatings

Our custom-made products are precisely adapted to your individual requirements.

Our experienced engineers will be pleased to assist you in your planning:

**+49 2296 - 8030**  
**info@vma-getzmann.de**

